



NEIGHBORHOODS USA NEWSLETTER AWARD  
FIRST PLACE WINNER!

## 25th Annual Bowl-a-thon Raises Record-breaking Funds for EMCC

The EMCC hosted its 25th Annual Bowl-a-thon at Dream Lanes on Saturday, November 6th. Funds raised will support EMCC's Youth Minority Achievement Program. A record-breaking event brought in over \$50,000 which is an outstanding accomplishment compared to the first Bowl-a-thon which raised \$2000. Guest announcer Leigh Mills from NBC 15 joined the fun along with Bucky Badger from UW-Madison, Wolfie from Madison College, Scoopie from Culver's, Maynard from the Mallards and D.C. Eagle from the Madison Capitols.

EMCC youth program participants bowled with community members and a great time was had by all.

Thank you goes out to the many corporate, group and individual sponsors and most of all, the bowlers and their pledge sponsors. Premier Sponsors for 2021 were the Elks Madison Lodge #410 and Tallard Apartments. Dream Lanes was also awarded the Community Partnership Award. ■



EMCC raised \$2000 at the first Bowl-a-thon and **OVER \$50,000** at this year's 25th annual Bowl-a-thon.



More Bowl-a-thon on Page 2-3

Visit EMCC's website at [www.eastmadisoncc.org](http://www.eastmadisoncc.org)

**Children's Museum Field Trip**  
Pg. 4



**Adult & Family Programs**  
Pg. 5



**Community Partners**  
Pg. 6



**Partner Shout-Outs**  
Pg. 7



# THANK YOU

## Bowl-a-thon prize donors and sponsors!

### 2021 BOWL-A-THON PRIZE DONORS

- Buck and Honey's
- Capital City Tattoo
- Chick fil-A
- Culver's
- Glass Nickel Pizza
- Golf Courses: Bridges, Cherokee and Oaks
- Goodman Jewelers
- Ian's Pizza
- Marcus Cinema Sun Prairie
- McDonald's
- Milwaukee Bucks
- Target
- UW-Badgers



facebook



We are on Facebook! On Facebook, we have our up-to-date schedule of events. You will also be able to see pictures of EMCC events. Give us a "Like", so you stay up-to-date with what is happening in the community.



No Bowl-a-thon is complete without

# Mascots!



Mascots provided through in-kind donation



MADISON  
AREA | TECHNICAL  
COLLEGE





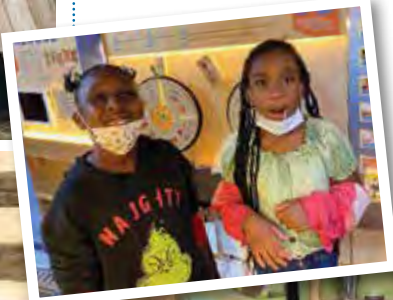
# YouTH News

## Kids learn and play at the Children's Museum Field Trip

by Miranda O'Rourke

These were pictures taken from a trip to the Children's Museum near the capital square. The kids were able to see a few displays as well as play on their large outdoor playground. In this playground, there was an authentic log cabin with different tools, clothes, etc from the time period. This was a favorite on the trip.

There was also a demonstration on dry ice going on that the kids loved! They were able to see one of the workers place the dry ice to create bubbles that the kids could pop. Finally, there was another outdoor piece where the kids



learned about trash, recycling, and how some products can be reused. There were UW students talking about how water bottles were being made from previous trash pieces. ■

### YOUTH PROFILE



#### Alizae Horrichs

Age: 13

School: 7th Grade, Sherman

Favorite School Subject: Science — CSI

Years attending EMCC: A few months

Favorite EMCC Program: Science

Hobbies: Skateboarding, Drawing, Gaming, Walking with friends

Favorite Food: Corn Dogs

Adult Role Model: My Mother

When I'm older I would like to be: Psychologist, I want to help people change.

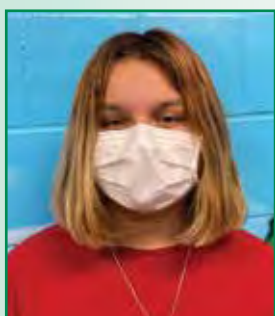
## Kids are safer with The Walking Bus

HAWTHORNE SCHOOL ← TO FROM → EMCC

Hawthorne and EMCC staff and volunteers brainstormed ways to assist kids during the walk home from school. Some children had experienced bullying which led to the new collaborative program, the Walking Bus. Staff and volunteers walk the children in a small group to and from EMCC and Hawthorne. ■



### YOUTH PROFILE



#### Madison Vance

Age: 12

School: 7th Grade, IMAP

Favorite School Subject: Spanish

Years attending EMCC: 1Year

Favorite EMCC Program: Science

Hobbies: Drawing, Watching TV, Playing video games

Favorite Food: Any type of cooked potato

Role Models: Mommy, Daddy and myself

What I want to be when I grow up: Fashion Designer

# EMCC ADULT & FAMILY PROGRAMS

## Fall Fun with the Truax Neighborhood Association

Traditionally each fall, the Truax Neighborhood Association (TNA) hosts a fall festival in the outdoor space of EMCC. Due to COVID, residents and youth program participants were able to enjoy pumpkin decorating, crafts, cider, caramel apples and cookies. Special Thanks to Pat Hadden, TNA President, for baking the cookies! ■



## Outdoor Movie Night



EMCC was fortunate to take part in the City of Madison's programming opportunity this fall to show a movie outside using a large LED video wall. Due to the overwhelming mosquitoes in the grass, the movie was moved to the back parking lot which was turned into a movie theater. Candy and popcorn included! Residents and youth program participants' enjoyed the film, COCO. By the end of the film, the children were dancing in the parking lot to the final credits. ■



## The Sewing Machine Project comes to EMCC

Six EMCC participants attended a 6-week sewing class at EMCC presented by The Sewing Machine Project.®

The Sewing Machine Project® offers classes at local community centers, serving clients designated by these centers. The curriculum focuses on basic sewing and mending and becoming acquainted with the sewing machine — how to operate and maintain it. Each course runs six weeks. Students are

required to attend all 6 sessions in a course and "Pay it Forward" by completing a project to be donated to the Center where the class

is held. After meeting these requirements

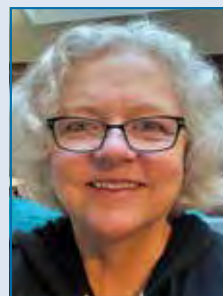
students are "gifted" the machine on which they learned along with a small starter sewing kit. The talented

instructor, Rebecca

Sites encouraged students to take risks and push boundaries within each lesson. Volunteer provided support as needed. ■



## BOARD MEMBER PROFILE



### Kris Rasmussen

Kris Rasmussen, retiring EMCC Board President, is leaving the Board after 35+ years of amazing service to the community. Kris continues to serve the community through pro bono immigration work through the Community Immigration Law Center.

"I've been honored to be associated with EMCC for all this time. When I think of how many people's lives have been positively changed by the efforts of the amazing staff, I am optimistic about the future." ■

Learn more about EMCC programs at [www.eastmadisoncc.org](http://www.eastmadisoncc.org)





COMMUNITY PARTNERSHIPS



**DANENET, CITY OF MADISON, CDA & THE PUBLIC SERVICE COMMISSION**

For the past year, EMCC has provided technology support to the Truax and Webb-Rethke housing complexes on the east side. The EMCC Digital Access Program provides internet-enabled devices and one-on-one technology support and training in partnership with DANENet, a local non-profit providing tech support to non-profit agencies. Donald Rosby of DANENet hosts drop-in training hours from 10am to 12pm on Fridays at EMCC. ■



**FOOD PANTRY**

Throughout the pandemic, many volunteers maintained the food pantry at an increased capacity despite the outdoor elements.



Without community partnerships, this program would not exist. Thank you Second Harvest, Community Action Coalition, Madison College, East High School, Madison East Monona Rotary, JP Cullen, United Way/Volunteer Your Time, EMCC volunteers, interns and staff. On December 7th, the food pantry re-opened indoors! A warm environment allows the center to provide additional resources and patrons may leisurely choose items. At this distribution we were also able to provide knit items, hand sanitizer, books and light bulbs. ■



**ASCENDIUM EDUCATION GROUP**

Employees from Ascendium Education Group restocked the First Impressions Clothing Room and food pantry. ■



**JP CULLEN**

Employees from JP Cullen prepared food for the first indoor food pantry at EMCC since March of 2020. ■



**HOLIDAY FOOD BASKETS AND TOY DISTRIBUTIONS**

Through the generosity and leadership of longtime EMCC supporter, Helen Madsen, EMCC was able to provide some holiday cheer through food baskets and toys for kids in the Truax and Webb-Rethke neighborhoods. Despite not being able to host the annual holiday party with Santa at EMCC, families received some holiday gifts. Thank you goes out to the many churches and volunteers who support this program: Helen Madsen, Martha Galston, Marbeli Bruno, Diane and Jaedyn Neal, St. Dennis Church, Lake Edge United Church of Christ, Messiah Lutheran Church, Bethel Lutheran Church-ECLA, Trinity Lutheran Church, Hope Lutheran Church, Word of Life ACM Church, and Covenant Presbyterian Church. ■



American Family Insurance is pleased to help underwrite East Madison Community Center's newsletter.

**THANK YOU to American Family for printing Centerpoints!**



- **United Way**  
HOPES program support
- **Retired Senior Volunteer Program**  
Knit items and sensory toys
- **Madison Knitters' Guild**  
Knit items
- **Hawthorne Elementary**  
Vegetables for food pantry
- **Madison Parks Program**  
EMCC Outdoor movie night
- **Truax Neighborhood Association**  
Older adults group
- **Overture Center/ Beth Racette**  
Community Ticket Program
- **Milwaukee Bucks**  
Community Ticket Program
- **UW Madison Students**  
Service with Youth STEM class
- **First Tee**  
Backpacks for students in the reading program

- **Fund for Children**  
Multicultural Art Program support
- **Focus on Energy**  
LED Bulbs for distribution



*Thank You!*

## EMCC Awarded Good Neighbor Grant

After a company-wide vote, the employees of Ascendium Education Group selected EMCC to receive a Good Neighbor Grant. This first-time award recognizes the Center's work to increase education and workforce training outcomes for learners from low-income backgrounds in the communities where the employees live and work.



Ascendium employees have been volunteering at EMCC for several years and stepped up during COVID-19 to assist with the food pantry, children's garden and cleaning up the neighborhood. ■

# Big Thanks!



**CUNA MUTUAL**  
Foundation

Common Purpose. Uncommon Commitment.

The CUNA Mutual Group Foundation was recently recognized as a National Philanthropy Day Honoree: Outstanding Philanthropic Organization or Foundation by the Association of Fundraising Professionals Greater Madison. CUNA recently announced a \$100,000 donation to EMCC for 2022 program support.



## Behind on your bill? MGE is here to help.



### We're here to work with you.

MGE representatives are here to help households and businesses that may need help. If you need assistance or have questions about your account, please visit the Customer Service section of [mge.com](http://mge.com) or call us at (608) 252-7144.

### Scams are on the rise. Make sure it's us.

If you receive a call, email or visit that you suspect is fraudulent, please call MGE at (608) 252-7222.

### Get free energy-saving advice.

MGE can provide expert advice for how to assess and manage your energy use. Email our Energy Experts at [AskExperts@mge.com](mailto:AskExperts@mge.com).

### MGE is committed to safe and reliable service.

Lights out, power line down or other emergency? Call us at (608) 252-7111. Smell gas? Leave immediately and call us at (608) 252-1111.



Your community energy company





NEIGHBORHOODS USA  
NEWSLETTER AWARD  
**FIRST PLACE WINNER!**

Current occupant or

## E M C C C E N T E R P O I N T S

### EMCC 2021 VOLUNTEERS

#### Youth Volunteers

Juelz Alexander, Laniya Brown, Ashley Bruno, Dominic Dean, Nate Fitzpatrick, Sincere Gains, Antuan Graves-Haskings, Antuan Haskins, Zaniya Lewis, Serenity Little, Madison Vance, Eric Xiong

#### Food/Clothing/Household Items Distribution

Ally Becker, Holden Brandon, Marbeli Bruno, Madeline Carroll, Martha Galston, Rosie Haskins, Perez Kirkpatrick, Cortney Anderson Kramer, Talita Maciel, Diane Neal, Miranda O'Rourke, Lilly Soderberg, Gwendolyn Pointer, LC Williams, East Madison/Monona Rotary Clubs, JP Cullen, Old National Bank

#### Program Volunteers

Martha Galston, Kaylee Geier, Honorine Ilboudo, Perez Kirkpatrick, Ousmane Nikiema, Zach Robinson, Ascendium Education Group, Exact Sciences, Madison College Service Learning Academy

#### Social Media/Graphic Design/Website

Allie Christensen, Sandy Wagener, Thomas Wilkowske

#### Board Members

Erika Brown, Marbeli Bruno, D'livia Dumas-Henriquez, Larry Hamlin, Neri Haried, Rosie Haskins, Donnis Jallow, Tracy Lomax, Dr. Melina Lozano, Meghan O'Dell, Jamal Palmer, Kris Rasmussen, Tauri Robinson, Kris Rasmussen, Je 'Dauri Robinson, Renee Robinson, Alex Shade Sandy Xiong

#### Resource Development

Larry Hamlin, Bunny Lenburg

*thanks!*



The East Madison Community Center is a member agency of United Way and is funded in part by the City of Madison and the Community Development Division.



CenterPoints is published four times per year and distributed free of charge to a circulation of over 3000 by East Madison Community Center, 8 Straubel Ct. For information on CenterPoints articles, copy deadlines or advertising policies, call us at 608-249-0861.

Executive Director: Tom Moen

Assistant Director: Regina McConnell

Youth Prgm. Mngr.: John Harmelink

Assistant Youth Prgm. Mngr.: Erics Peters

Admin. Assistant: Typhanny Greene

Accountant: Bonnie Krattiger

Office Assistant: Martha Galston

Janitor: Nate Savado

Youth Workers:  
Ashley Bruno James Xiong  
Nate Savado Pau Xiong  
Elijah Smith Maleevong Xiong

CenterPoints is designed in-kind by Sandy Wagener. Special Thanks to American Family Insurance for printing the EMCC CenterPoints.

